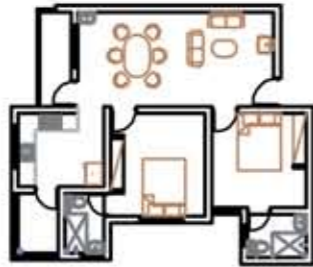
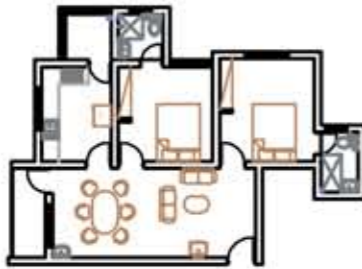


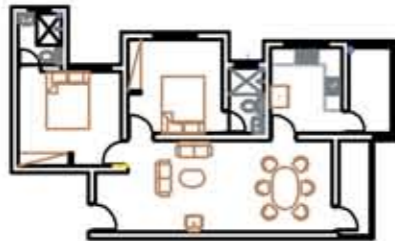
type **a**  
1029 sqft



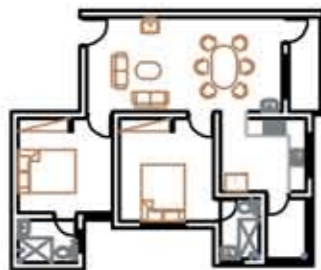
type **b**  
981 sqft



type **c**  
971 sqft



type **d**  
983 sqft



## Route map



## PADMASREE SHANTHIKETAN

Padmasree Developers  
ENKE Chambers, G.P. Road, Ernakulam  
Kochi-682035  
Ph: 0484-2360532, 2372691  
Mob: 9745866160  
www.padmasreedevolvers.in  
office@padmasreedevolvers.com



# PADMASREE SHANTHIKETAN

*Be at peace!*





PADMASREE  
SHANTHINIKETAN

Be at peace!

“Welcome to Padmasree Shanthiniketan. Located in temple town tripunithra it is everything you have wanted in a home and more! Schools, Hospitals and Malls are just a stones throw away while the upcoming IT hub Kakkanad is just across the newly built seaport airport road. Whichever way you look at it Padmasree Shanthiniketan is the perfect answer to you dream of owning a home”

## PADMASREE SHANTHINIKETAN SPECIFICATIONS

### STRUCTURE

RCC frame structure on pile foundation, walls with solid cement concrete blocks, plastered to smooth finish.

### FLOORING

Vitrified flooring 60X60 cms for Bed room, Living, Dining and Kitchen using H&R Johnson Tiles or Equivalent.

### KITCHEN

Platform done in quality granite with stainless steel sink. 60 cm dado above the granite counter using H&R Johnson Tiles or equivalent.

### TOILET

Concealed plumbing, Telephonic shower, Over head shower, Wall mixer in all bath room. CP fitting of NOVA/Johnson/ Hindware make or equivalent. Hindware or equivalent water closet, wash basin and provision for exhaust fan. Ceramic anti skid tiles for floors and glazed concept series tiles for walls up to 2.10 meters using H&R Johnson Tiles or equivalent.

### JOINERY

Teak wood for main doors, moulded panel doors for interior, Powder coated Aluminium/with MS Grills and Glass for windows and FRP section bathroom doors.

### PAINTING

Putty finished/ Plastic Emulsion in all rooms. Melamine finishes for main door, enamel paint for internal doors.

### ELECTRICAL

Concealed conduit wiring using ISI approved copper conductor & MDS/Siemens/ Crabtree or equivalent switches with ELCB & MCB.

### WATER SUPPLY

Sump and over head water tank & 24 hour water supply, rain water harvesting with an exclusive tank.

### POWER BACK UP

Generator back up for elevator, common lighting & pumps.

### FIRE & SAFETY

Fire safety features as per State Govt: Safety Norms

### COMMUNICATION

Cable TV, Telephone point intercom in drawing room and bed rooms.

## PADMASREE SHANTHINIKETAN EXCLUSIVE AMENITIES

- Spacious lobby
- Health club/ Children's play area
- Roof garden/ Open party hall
- Solar water heater
- Covered parking
- High speed elevator
- Sewage treatment plant
- Transformer
- Generator back-up for common area and lift
- Rain water harvesting

